



Pioneer DreamMicro

Rackmount 1U Server - **S48 Series**

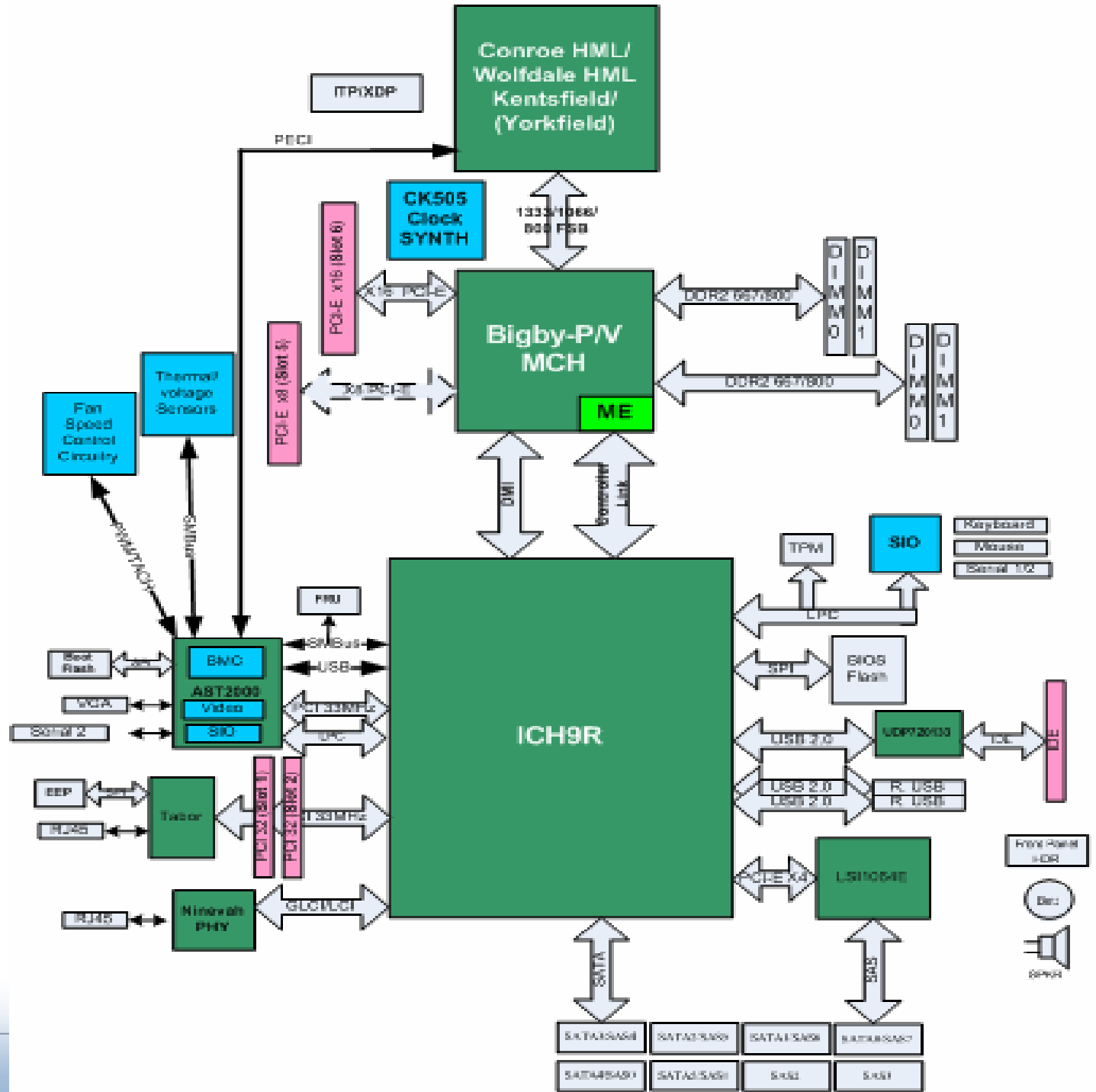
S48B - Spec

Dimension	1U Rackmount 16.9" x 1.7" x 26" (WxHxD)
M/B Form Factor	12" x 9.6"
Processor Support	Intel® Xeon® multi-core processors 3000 sequence Intel® Core™2
Socket	LGA 775
FSB	800/ 1066/ 1333 MHz
Chipset	Intel® 3210 (Bigby-P) + ICH9R
Memory Support	DDR2 667/ 800 ECC Unbuffered 4 x 240pin DIMM, Max 8 GB for dual channel
PCI Expansion	PCI-E (x16) (Full Height) slot x1
3.5" HDD	Support 4 SAS/ SATAII Hot-Swap
SAS controller	LSI 1064E SAS 3.0 Gb/s
SATA controller	Intel® 82801 SATAII 3.0 Gb/s

Integrated Graphics (Video)	Aspeed AST2000 w/ 8MB DDR2 Video Memory
RAID Support	SW RAID 0, 1, 10; RAID 5 support (optional)
Network Controller	Two Intel® Gigabit Ethernet connections Aspeed AST2000 (dedicate for IPMI)
Slim DVD-ROM	Slim DVD-Combo x1
Front I/O	USB (v2.0) x2
Rear I/O	PS/2 x2, COM (DB-9) x1, VGA (DB-15) x1, USB (v2.0) x2, RJ-45 x 3
Power Supply	High efficiency 400W AC power supply w/PFC
KVM over IP	AST2000
Server Management	IPMI v2.0



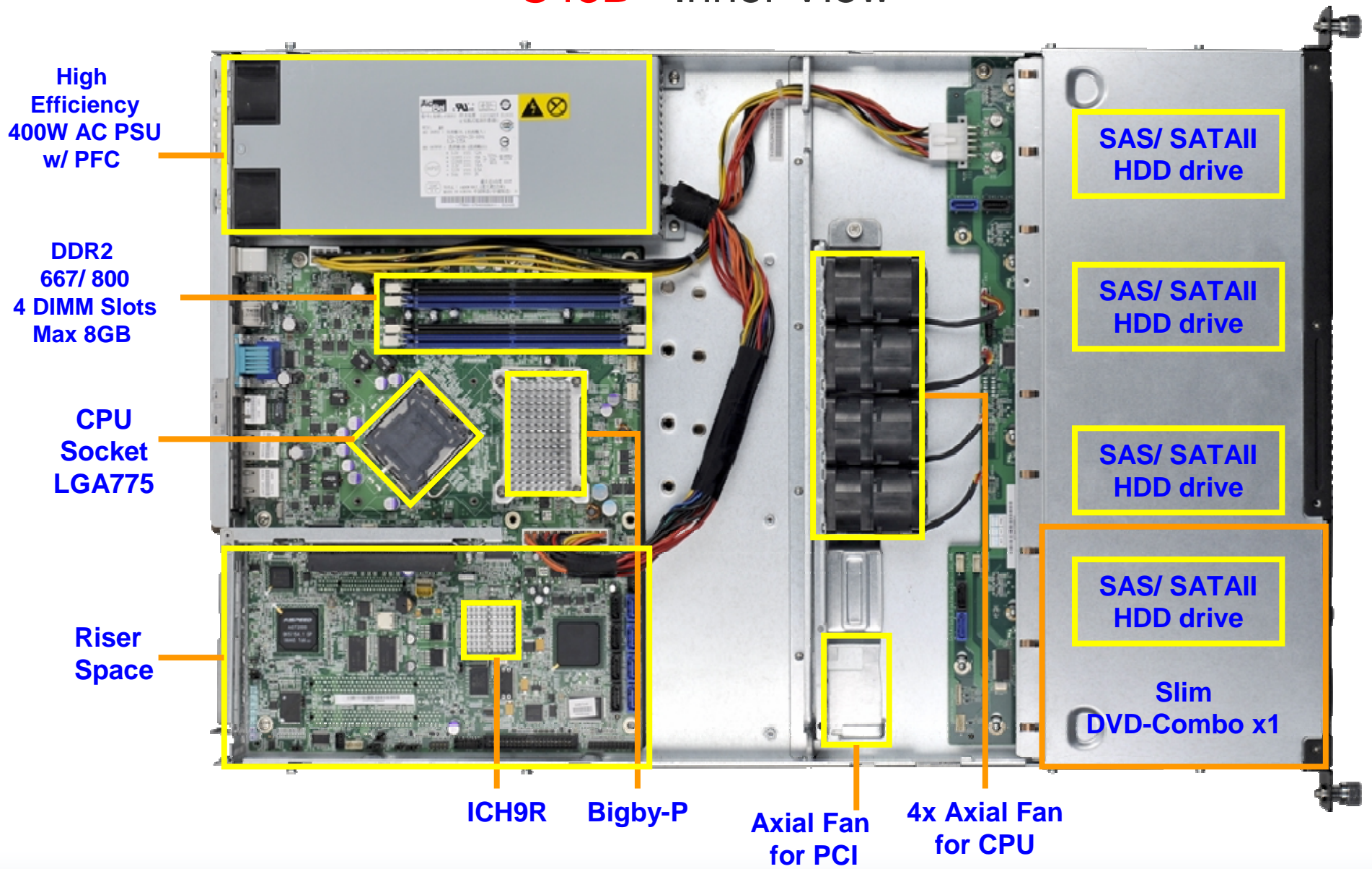
S48B - Block Diagram



S48B - Outlook



S48B - Inner View



S48B – Front View



Slim
DVD-Combo

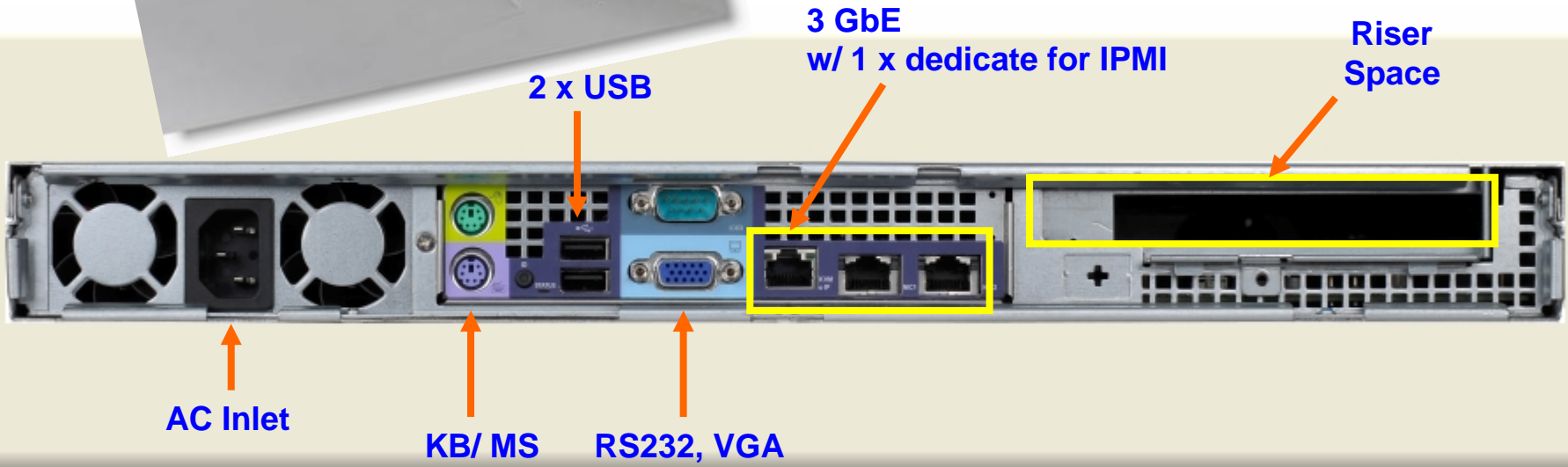
2 x USB

Power Button &
HDD status LEDs



4 x Hot-Swap
SAS/ SATAII HDD

S48B - Rear View



AC Inlet

KB/ MS

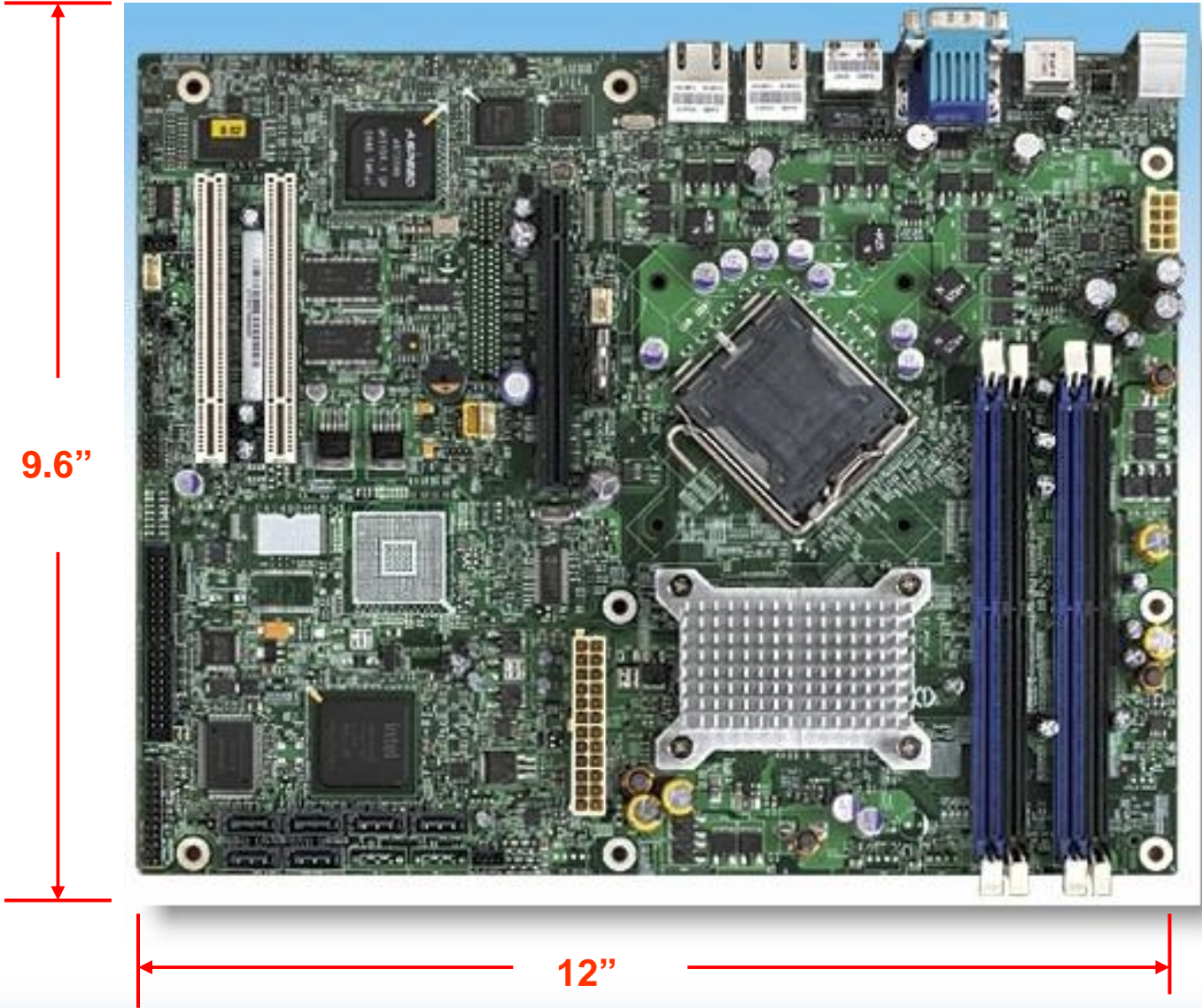
RS232, VGA

2 x USB

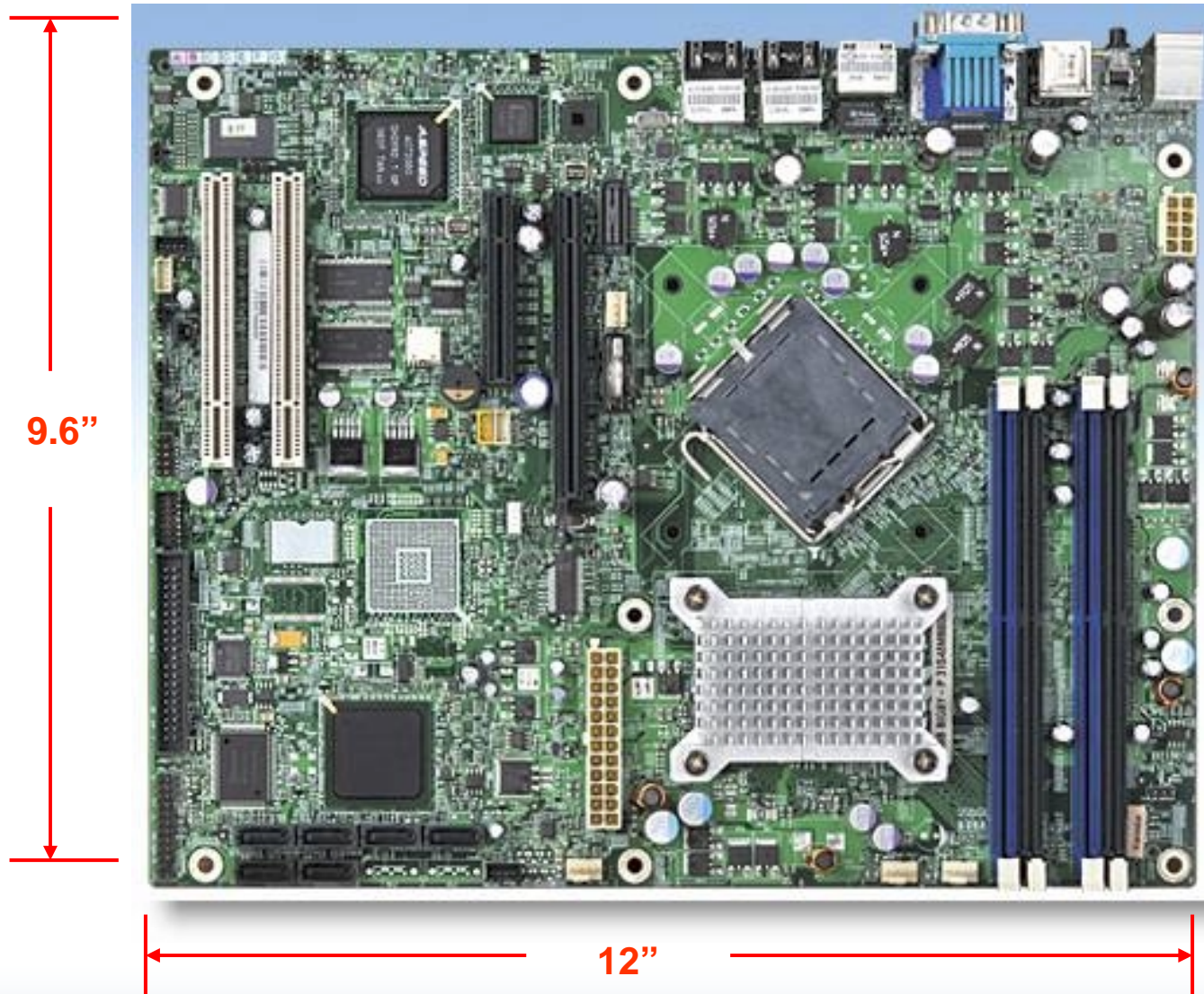
3 GbE
w/ 1 x dedicate for IPMI

Riser
Space

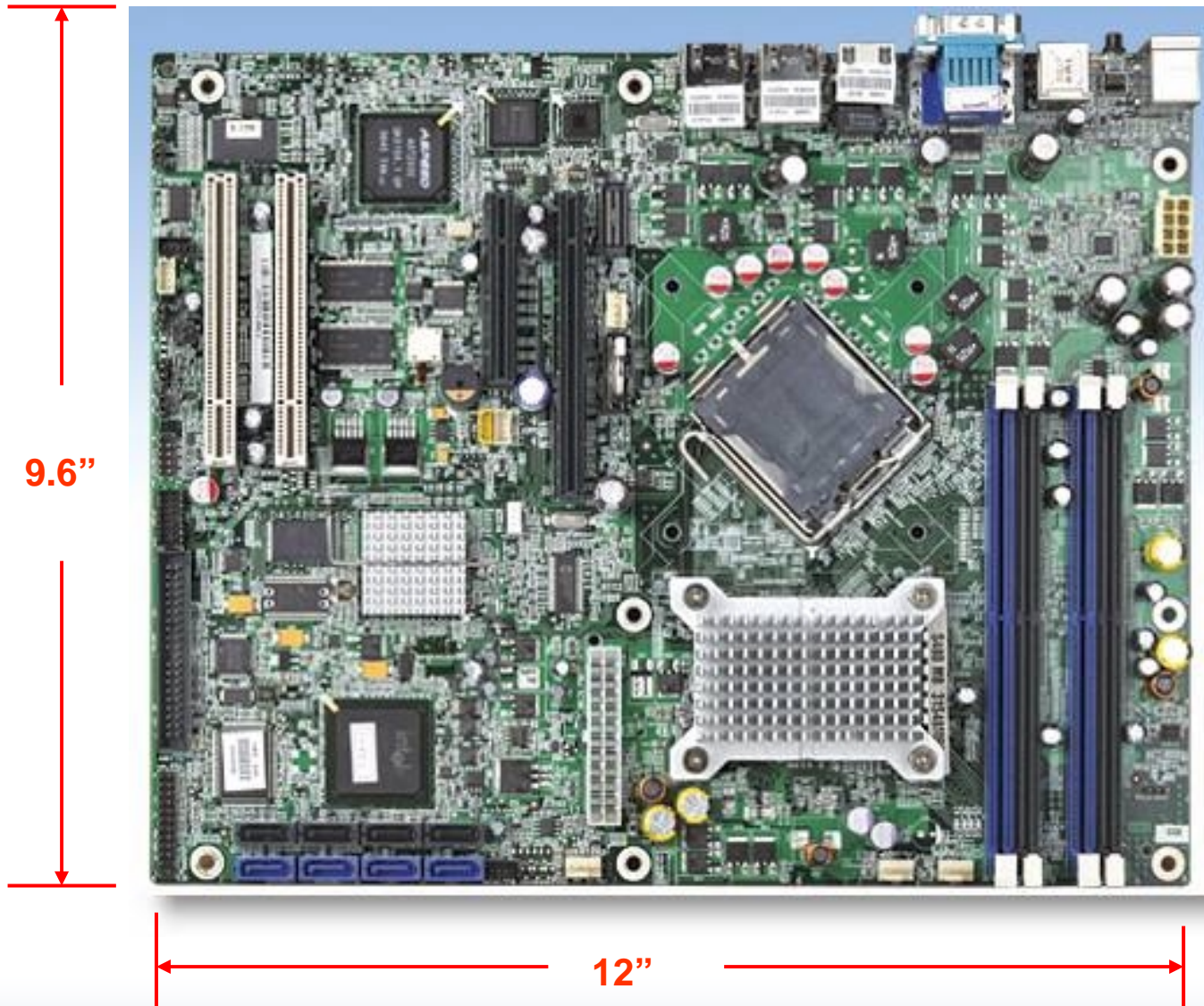
S48BMB (V) – SSI ATX MB



S48BMB (A) – SSI ATX MB



S48BMB (S) – SSI ATX MB



S48B - Features - I

✓ Briefing

- **S48B series**, 1U **uni-processor** rack-optimized server, provide business comprehensive solution by supporting the latest Xeon® multi-core processor **3000** sequence, **IPMI 2.0**, and, what has become increasingly essential for business on remote system management - **KVM over IP** compliance. What is more, **S48B series** are designed for **SMB applications, such as, network infrastructure, front-end enterprise databases, minimal-downtime cluster server** and etc.



S48B - Features - II



✓ Flexible Storage Solution

- **S48B series** support either **SAS** or **SATAII HDD** application w/ benefit on **hot-swap** utility for greater storage capacity and maximum performance maintenance.

S48B - Features - III



High-efficiency PSU

- The power supply can still reach the minimum efficiency of **83%** under maximum loading of both *110V/50Hz & 220V/60Hz*.

Endeavor effort to Green IT concept

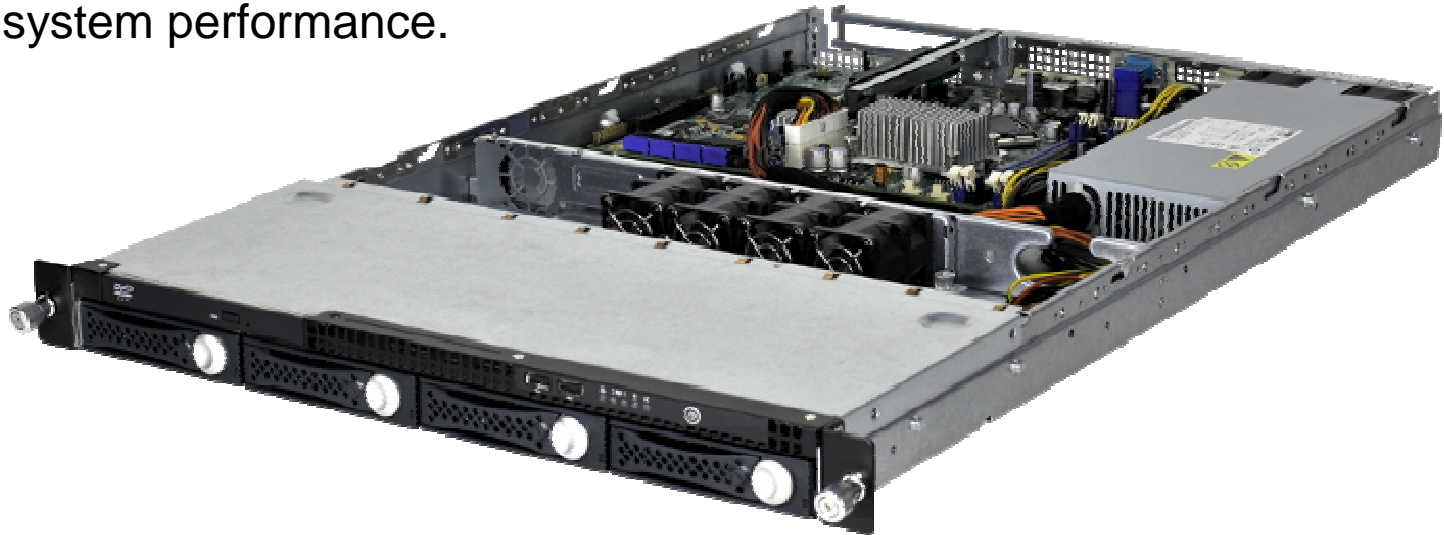
- For environment protection, **S48B series** have compliance with **RoHS** (Restriction of Hazardous Substances Directive).



S48B - Features - IV

✓ Powerful Computing

- Intel® Xeon® Multi-Core Processor **3000** sequence
- Intel® **3210 (Bigby-P)** MCH and Intel® **ICH9R (82801)**
- up to **8GB DDR2 667/800 ECC Unbuffered memory**, characterized by superb bandwidth and low latency to improve system performance.

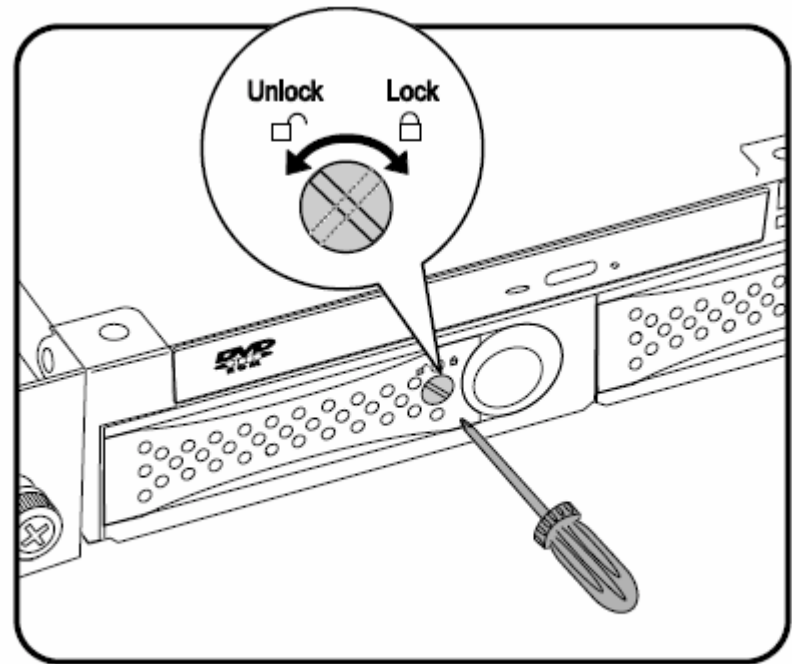


S48B - Features - V



✓ HDD Security Lock

• The HDD bays incorporate a **security screw** to prevent accidental HDD release.



* to **engage the lock**, turn the security screw clock-wise toward the Lock symbol.

* to **disengage the lock**, turn the security screw counter clock-wise toward the Unlock symbol as shown.

S48B/ S48B MB - Features - V

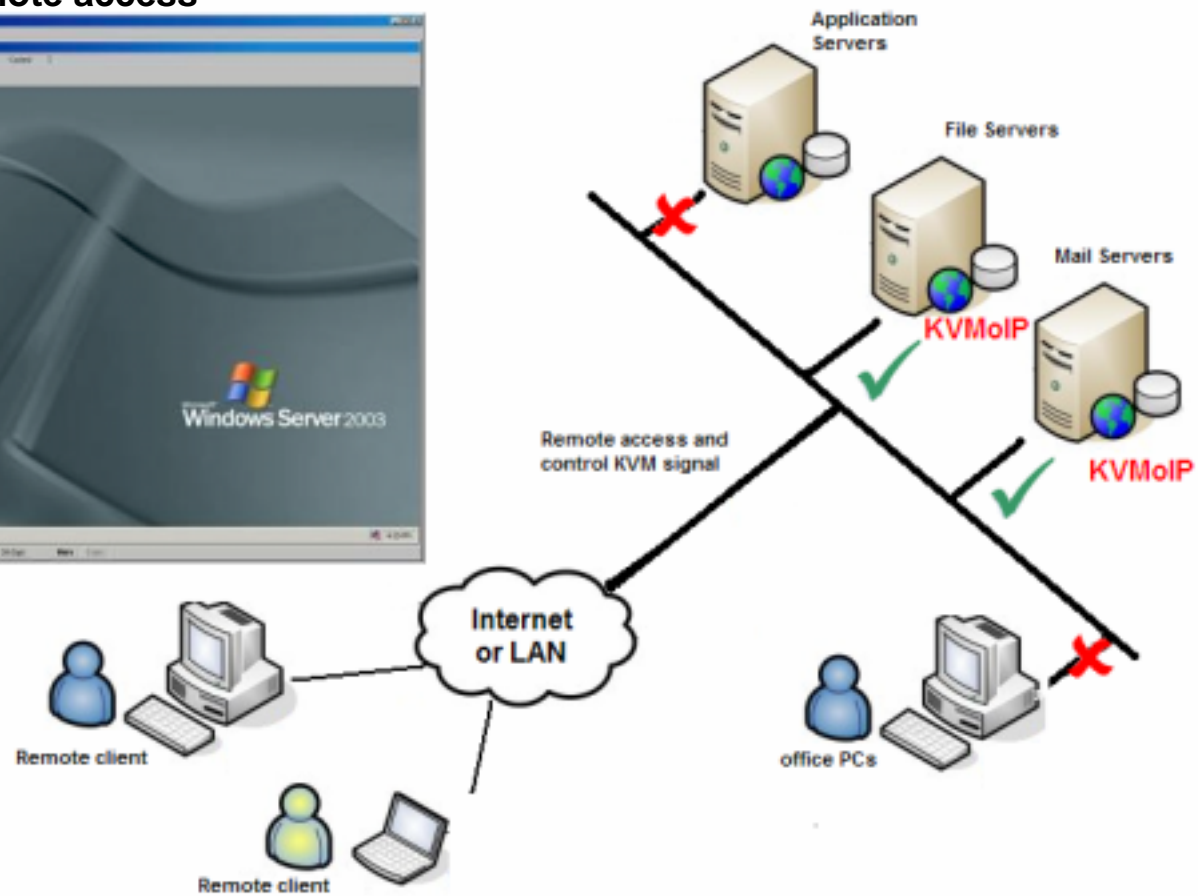
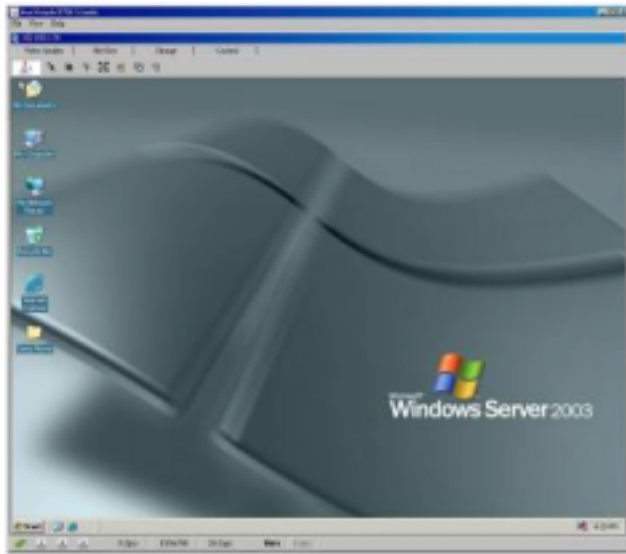


Today's mission critical server requires a secure, fully available remote access for administrators to access power commands, troubleshoot the system or load software anytime from anywhere in the world. Hence, "KVM over IP" is born for the mission. To accomplish such great mission, Quanta has "AST2000."

S48B/ S48B MB have onboard "AST2000," a high-end silicon chip incorporating *VGA/2D Graphics, BMC* and *KVM over IP* controller by which offered as an innovative and cost-effective management solution for business.

S48B – KVM over IP

- IPMI 2.0 Compliant
- web base remote access

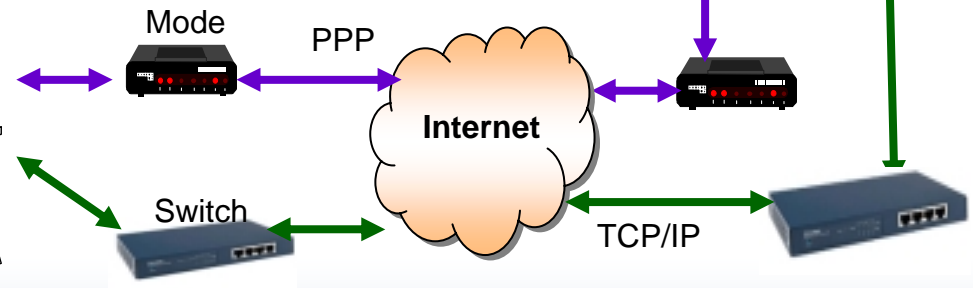


What's **S48B** KVMoIP solution? Out-of-Band Server Management

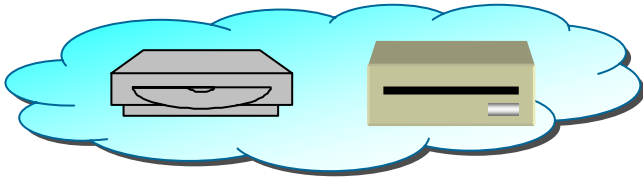


Friendly and comprehensive UI

- eSMS – Web Console
- SNMP Manager
- Telnet console



S48B Console Redirection & Virtual Floppy/ CD-ROM



Applications:

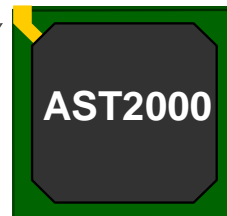
- ✓ Remote access CD/DVD ROM and floppy
- ✓ Remote OS install

✓ USB mass device simulator to emulate CDROM or Floppy device

✓ USB command, status, data transition to remote I/O device.

✓ Access data through network with proprietary protocol

✓ Agent reside in the remote host to interpret the request



Potential Users

